

YEAR

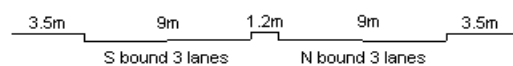
2015

LINK

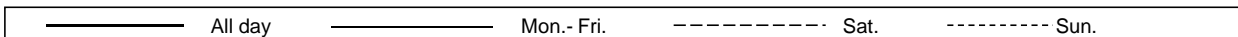
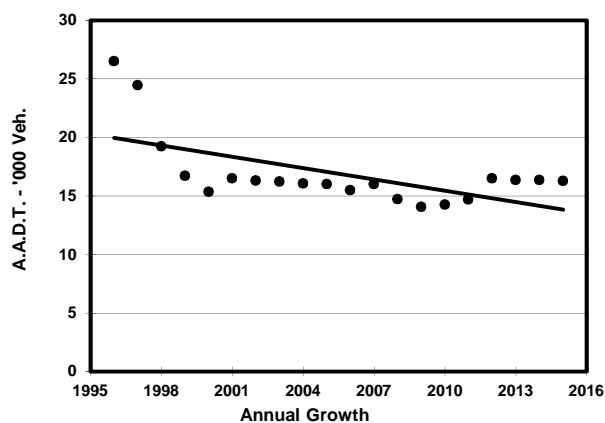
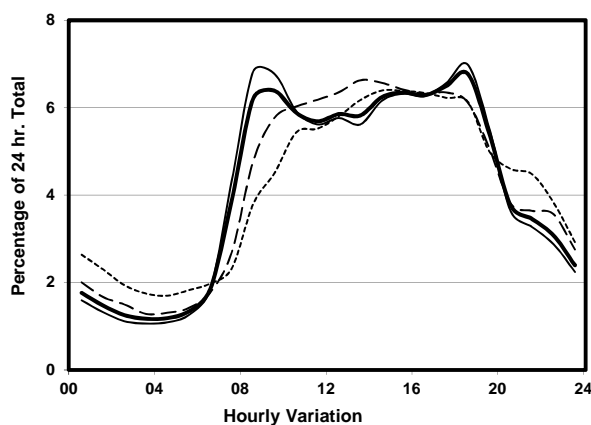
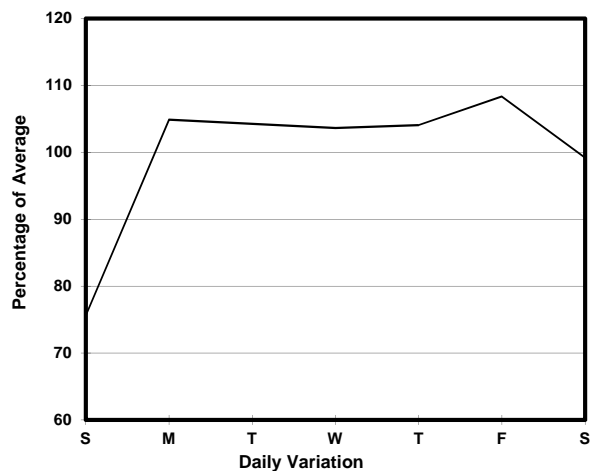
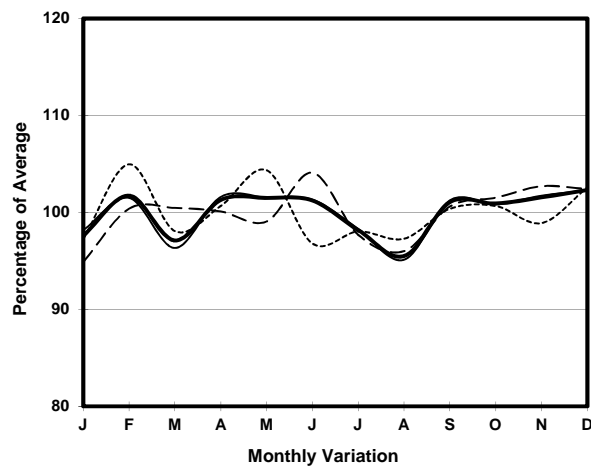
LAI CHI KOK RD (from TONKIN ST to HING WAH ST)

CORE STATION
ROAD NETWORK
ROAD TYPE

3008
MAJOR
PRIMARY DISTRIBUTOR



1. TRAFFIC FLOW VARIATION AND GROWTH



2. TRAFFIC CHARACTERISTICS (BY DIRECTION)

Parameter	All - Day	Mon. - Fri.	Sat.	Sun.
SOUTH BOUND				
A.A.D.T.	6940	7220	7180	5900
R 12 / 24 - %	70.4	71.3	69.5	65.8
R 16 / 24 - %	86	86.7	85.4	82.6
AM Peak Hour	0900-1000	0800-0900	0900-1000	0900-1000
One-way flow at AM peak hour	380	440	380	250
T - % (AM)	-	-	-	-
PM Peak Hour	1800-1900	1800-1900	1600-1700	1600-1700
One-way flow at PM peak hour	460	490	460	400
T - % (PM)	-	-	-	-
Prop.of commercial vehicles - 16 hr.	-	-	-	-
NORTH BOUND				
A.A.D.T.	9340	10100	9140	6630
R 12 / 24 - %	73	74.5	70.8	64.4
R 16 / 24 - %	88.7	89.8	87	83.3
AM Peak Hour	0900-1000	0900-1000	0900-1000	0900-1000
One-way flow at AM peak hour	660	750	560	320
T - % (AM)	-	-	-	-
PM Peak Hour	1800-1900	1800-1900	1700-1800	1600-1700
One-way flow at PM peak hour	640	720	580	400
T - % (PM)	-	-	-	-
Prop.of commercial vehicles - 16 hr.	-	-	-	-

3. OTHER INFORMATION AND COMMENT